

DECIBEL - Main Result

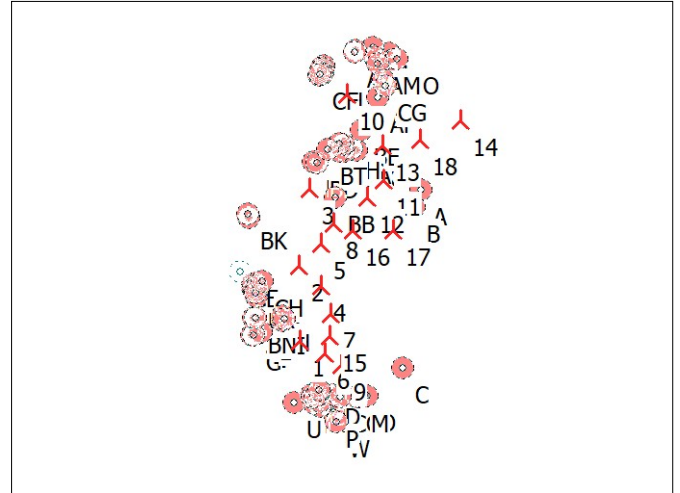
Calculation: Low frequency - alternative B

Noise calculation model:

Danish low frequency 2024

The calculation is based on "BEK nr. 996 af 26/08/2024" from the Danish Environmental Agency.

All coordinates are in
 Geo [deg]-WGS84



New WTG

Noise sensitive area

WTGs

	Longitude	Latitude	Z	Row data/Description	WTG type			Noise data			First wind speed [m/s]	LwaRef [dB(A)]	Last wind speed [m/s]	LwaRef [dB(A)]		
					Valid	Manufact.	Type-generator	Power, rated [kW]	Rotor diameter [m]	Hub height [m]					Creator	Name
1	24,435749° E	56,659337° N	31,7	VESTAS V172-7.2 7200 20...	Yes	VESTAS	V172-7.2-7 200	7 200	200,0	200,0	USER	Vestas V172-7.2	6,0	93,4	8,0	94,7
2	24,434814° E	56,681747° N	55,2	VESTAS V172-7.2 7200 20...	Yes	VESTAS	V172-7.2-7 200	7 200	200,0	200,0	USER	Vestas V172-7.2	6,0	93,4	8,0	94,7
3	24,440661° E	56,704454° N	53,0	VESTAS V172-7.2 7200 20...	Yes	VESTAS	V172-7.2-7 200	7 200	200,0	200,0	USER	Vestas V172-7.2	6,0	93,4	8,0	94,7
4	24,446997° E	56,675718° N	34,0	VESTAS V172-7.2 7200 20...	Yes	VESTAS	V172-7.2-7 200	7 200	200,0	200,0	USER	Vestas V172-7.2	6,0	93,4	8,0	94,7
5	24,447297° E	56,688282° N	52,2	VESTAS V172-7.2 7200 20...	Yes	VESTAS	V172-7.2-7 200	7 200	200,0	200,0	USER	Vestas V172-7.2	6,0	93,4	8,0	94,7
6	24,448950° E	56,655536° N	46,7	VESTAS V172-7.2 7200 20...	Yes	VESTAS	V172-7.2-7 200	7 200	200,0	200,0	USER	Vestas V172-7.2	6,0	93,4	8,0	94,7
7	24,452033° E	56,667331° N	54,5	VESTAS V172-7.2 7200 20...	Yes	VESTAS	V172-7.2-7 200	7 200	200,0	200,0	USER	Vestas V172-7.2	6,0	93,4	8,0	94,7
8	24,454013° E	56,694313° N	55,2	VESTAS V172-7.2 7200 20...	Yes	VESTAS	V172-7.2-7 200	7 200	200,0	200,0	USER	Vestas V172-7.2	6,0	93,4	8,0	94,7
9	24,457988° E	56,652362° N	37,8	VESTAS V172-7.2 7200 20...	Yes	VESTAS	V172-7.2-7 200	7 200	200,0	200,0	USER	Vestas V172-7.2	6,0	93,4	8,0	94,7
10	24,461093° E	56,732470° N	44,0	VESTAS V172-7.2 7200 20...	Yes	VESTAS	V172-7.2-7 200	7 200	200,0	200,0	USER	Vestas V172-7.2	6,0	93,4	8,0	94,7
11	24,480877° E	56,707036° N	48,1	VESTAS V172-7.2 7200 20...	Yes	VESTAS	V172-7.2-7 200	7 200	200,0	200,0	USER	Vestas V172-7.2	6,0	93,4	8,0	94,7
12	24,471877° E	56,702002° N	51,0	VESTAS V172-7.2 7200 20...	Yes	VESTAS	V172-7.2-7 200	7 200	200,0	200,0	USER	Vestas V172-7.2	6,0	93,4	8,0	94,7
13	24,480642° E	56,717491° N	53,7	VESTAS V172-7.2 7200 20...	Yes	VESTAS	V172-7.2-7 200	7 200	200,0	200,0	USER	Vestas V172-7.2	6,0	93,4	8,0	94,7
14	24,522698° E	56,724837° N	43,9	VESTAS V172-7.2 7200 20...	Yes	VESTAS	V172-7.2-7 200	7 200	200,0	200,0	USER	Vestas V172-7.2	6,0	93,4	8,0	94,7
15	24,451739° E	56,660849° N	45,0	VESTAS V172-7.2 7200 20...	Yes	VESTAS	V172-7.2-7 200	7 200	200,0	200,0	USER	Vestas V172-7.2	6,0	93,4	8,0	94,7
16	24,464100° E	56,692193° N	52,8	VESTAS V172-7.2 7200 20...	Yes	VESTAS	V172-7.2-7 200	7 200	200,0	200,0	USER	Vestas V172-7.2	6,0	93,4	8,0	94,7
17	24,486364° E	56,692084° N	51,2	VESTAS V172-7.2 7200 20...	Yes	VESTAS	V172-7.2-7 200	7 200	200,0	200,0	USER	Vestas V172-7.2	6,0	93,4	8,0	94,7
18	24,500751° E	56,718952° N	49,6	VESTAS V172-7.2 7200 20...	Yes	VESTAS	V172-7.2-7 200	7 200	200,0	200,0	USER	Vestas V172-7.2	6,0	93,4	8,0	94,7

Calculation Results

Sound level

Noise sensitive area

No.	Name	Longitude	Latitude	Z	Immission height	Wind speed	Demands Noise	Sound level From WTGs	Demands fulfilled ?
				[m]	[m]	[m/s]	[dB(A)]	[dB(A)]	Noise
A	Gedini	24,501349° E	56,704096° N	47,2	1,5	6,0	20,0	12,9	Yes
A						8,0	20,0	14,2	Yes
B	Jaungedini	24,497591° E	56,698994° N	41,7	1,5	6,0	20,0	13,6	Yes
B						8,0	20,0	14,9	Yes
C	Maleji	24,491552° E	56,651377° N	30,2	1,5	6,0	20,0	8,8	Yes
C						8,0	20,0	10,1	Yes
D	Brigmani	24,409312° E	56,661146° N	28,8	1,5	6,0	20,0	10,2	Yes
D						8,0	20,0	11,5	Yes
E	Drakanberki	24,414655° E	56,662044° N	26,6	1,5	6,0	20,0	11,4	Yes
E						8,0	20,0	12,7	Yes
F	Ziles	24,426245° E	56,665379° N	30,2	1,5	6,0	20,0	14,2	Yes
F						8,0	20,0	15,5	Yes
G	Drakane	24,410391° E	56,661063° N	27,8	1,5	6,0	20,0	10,4	Yes
G						8,0	20,0	11,7	Yes
H	Pinni	24,425992° E	56,666893° N	32,8	1,5	6,0	20,0	13,8	Yes
H						8,0	20,0	15,2	Yes
I	Jaunziles	24,427343° E	56,665969° N	31,9	1,5	6,0	20,0	14,4	Yes
I						8,0	20,0	15,7	Yes

To be continued on next page...

DECIBEL - Main Result

Calculation: Low frequency - alternative B

...continued from previous page

Noise sensitive area

No.	Name	Longitude	Latitude	Z [m]	Immission height [m]	Wind speed [m/s]	Demands		Sound level		Demands fulfilled ?	
							Noise [dB(A)]	From WTGs [dB(A)]	Noise	Noise		
J	Jaunseglini	24,410770° E	56,666312° N	40,5	1,5	6,0	20,0	10,6		Yes		
J						8,0	20,0	11,9		Yes		
K	Piebalgas	24,411452° E	56,676414° N	36,0	1,5	6,0	20,0	11,0		Yes		
K						8,0	20,0	12,3		Yes		
L	Seglini	24,417731° E	56,664105° N	31,9	1,5	6,0	20,0	12,1		Yes		
L						8,0	20,0	13,4		Yes		
M	Lielskabuli	24,467211° E	56,642907° N	33,5	1,5	6,0	20,0	11,1		Yes		
M						8,0	20,0	12,4		Yes		
N	Zvirgzdupes	24,441944° E	56,643395° N	30,6	1,5	6,0	20,0	11,6		Yes		
N						8,0	20,0	13,0		Yes		
O	Kalna Smilgas	24,471885° E	56,643006° N	31,8	1,5	6,0	20,0	10,4		Yes		
O						8,0	20,0	11,7		Yes		
P	Mež setas	24,453758° E	56,638174° N	30,2	1,5	6,0	20,0	9,7		Yes		
P						8,0	20,0	11,0		Yes		
Q	Mazskabuli	24,466127° E	56,642910° N	31,6	1,5	6,0	20,0	11,3		Yes		
Q						8,0	20,0	12,6		Yes		
R	Indrani	24,453168° E	56,643222° N	35,4	1,5	6,0	20,0	12,4		Yes		
R						8,0	20,0	13,7		Yes		
S	Indrani 1	24,453088° E	56,643228° N	35,4	1,5	6,0	20,0	12,4		Yes		
S						8,0	20,0	13,7		Yes		
T	Zvirbuli	24,446461° E	56,640077° N	35,9	1,5	6,0	20,0	10,4		Yes		
T						8,0	20,0	11,7		Yes		
U	Lakstigalas	24,432258° E	56,641033° N	28,9	1,5	6,0	20,0	9,6		Yes		
U						8,0	20,0	11,0		Yes		
V	Ciekuri	24,443472° E	56,640781° N	31,0	1,5	6,0	20,0	10,5		Yes		
V						8,0	20,0	11,9		Yes		
W	Mazkrievini	24,455620° E	56,635467° N	30,8	1,5	6,0	20,0	8,6		Yes		
W						8,0	20,0	9,9		Yes		
X	Rozites Nr. 76	24,446955° E	56,739390° N	25,0	1,5	6,0	20,0	9,7		Yes		
X						8,0	20,0	11,1		Yes		
Y	Rozites Nr. 59	24,447865° E	56,739023° N	25,6	1,5	6,0	20,0	10,1		Yes		
Y						8,0	20,0	11,4		Yes		
Z	Rozites Nr. 10	24,448494° E	56,740929° N	29,9	1,5	6,0	20,0	9,4		Yes		
Z						8,0	20,0	10,7		Yes		
AA	Rozites 45	24,448053° E	56,739505° N	26,6	1,5	6,0	20,0	9,9		Yes		
AA						8,0	20,0	11,3		Yes		
AB	Rozites Nr. 14	24,445991° E	56,738194° N	33,8	1,5	6,0	20,0	10,0		Yes		
AB						8,0	20,0	11,3		Yes		
AC	Rozites Nr. 72	24,447248° E	56,739801° N	27,3	1,5	6,0	20,0	9,6		Yes		
AC						8,0	20,0	11,0		Yes		
AD	Rozites Nr. 65	24,447599° E	56,740503° N	28,6	1,5	6,0	20,0	9,4		Yes		
AD						8,0	20,0	10,7		Yes		
AE	Rozites Nr. 58	24,447835° E	56,738895° N	25,1	1,5	6,0	20,0	10,2		Yes		
AE						8,0	20,0	11,5		Yes		
AF	Rozites Nr. 24	24,447905° E	56,740160° N	27,0	1,5	6,0	20,0	9,6		Yes		
AF						8,0	20,0	10,9		Yes		
AG	Rozites Nr. 46	24,448109° E	56,738819° N	25,6	1,5	6,0	20,0	10,3		Yes		
AG						8,0	20,0	11,6		Yes		
AH	Rozites Nr. 43	24,447473° E	56,738419° N	25,7	1,5	6,0	20,0	10,3		Yes		
AH						8,0	20,0	11,6		Yes		
AI	Druvnieki	24,484305° E	56,744758° N	35,5	1,5	6,0	20,0	7,8		Yes		
AI						8,0	20,0	9,1		Yes		
AJ	Spodrini	24,475257° E	56,746619° N	30,6	1,5	6,0	20,0	7,6		Yes		
AJ						8,0	20,0	9,0		Yes		
AK	Pegasi	24,482574° E	56,740434° N	29,8	1,5	6,0	20,0	9,1		Yes		
AK						8,0	20,0	10,4		Yes		
AL	Akmenkalni	24,483815° E	56,734725° N	37,2	1,5	6,0	20,0	10,6		Yes		
AL						8,0	20,0	12,0		Yes		
AM	Vidusskurbas	24,477200° E	56,742919° N	33,5	1,5	6,0	20,0	8,8		Yes		
AM						8,0	20,0	10,1		Yes		
AN	Mazskurbas	24,476435° E	56,743682° N	33,0	1,5	6,0	20,0	8,6		Yes		
AN						8,0	20,0	9,9		Yes		
AO	Dumbraji	24,487995° E	56,742978° N	40,9	1,5	6,0	20,0	8,1		Yes		
AO						8,0	20,0	9,4		Yes		

To be continued on next page...

DECIBEL - Main Result

Calculation: Low frequency - alternative B

...continued from previous page

Noise sensitive area

No.	Name	Longitude	Latitude	Z [m]	Immission height [m]	Wind speed [m/s]	Demands		Sound level		Demands fulfilled ?	
							Noise [dB(A)]	From WTGs [dB(A)]	Noise	Noise		
AP	Salaskalni	24,477974° E	56,731600° N	47,5	1,5	6,0	20,0	12,2		Yes		
AP						8,0	20,0	13,5		Yes		
AQ	Zeltmarini 1	24,477895° E	56,741645° N	34,6	1,5	6,0	20,0	9,2		Yes		
AQ						8,0	20,0	10,5		Yes		
AR	Ruš as	24,480891° E	56,736673° N	33,6	1,5	6,0	20,0	10,4		Yes		
AR						8,0	20,0	11,8		Yes		
AS	Austrini	24,465556° E	56,745670° N	33,0	1,5	6,0	20,0	8,3		Yes		
AS						8,0	20,0	9,6		Yes		
AT	Kanneniek	24,465059° E	56,745180° N	31,6	1,5	6,0	20,0	8,5		Yes		
AT						8,0	20,0	9,9		Yes		
AU	Gali	24,451515° E	56,716542° N	34,8	1,5	6,0	20,0	12,3		Yes		
AU						8,0	20,0	13,6		Yes		
AV	Platkaji	24,459634° E	56,716290° N	34,2	1,5	6,0	20,0	13,1		Yes		
AV						8,0	20,0	14,4		Yes		
AW	Platkaji	24,459995° E	56,715738° N	35,4	1,5	6,0	20,0	13,3		Yes		
AW						8,0	20,0	14,6		Yes		
AX	Ataugas	24,466382° E	56,716038° N	35,6	1,5	6,0	20,0	14,3		Yes		
AX						8,0	20,0	15,7		Yes		
AY	Jaungali	24,451874° E	56,716417° N	36,2	1,5	6,0	20,0	12,3		Yes		
AY						8,0	20,0	13,6		Yes		
AZ	Mež strauti	24,445171° E	56,712550° N	31,3	1,5	6,0	20,0	13,2		Yes		
AZ						8,0	20,0	14,5		Yes		
BA	Slaveikas	24,463630° E	56,716441° N	34,4	1,5	6,0	20,0	13,7		Yes		
BA						8,0	20,0	15,0		Yes		
BB	Beci	24,454938° E	56,701857° N	35,4	1,5	6,0	20,0	16,4		Yes		
BB						8,0	20,0	17,7		Yes		
BC	Cenas	24,442696° E	56,712387° N	35,2	1,5	6,0	20,0	13,3		Yes		
BC						8,0	20,0	14,6		Yes		
BD	Strauti	24,444928° E	56,712211° N	35,0	1,5	6,0	20,0	13,4		Yes		
BD						8,0	20,0	14,7		Yes		
BE	Rajumi	24,468787° E	56,721846° N	35,3	1,5	6,0	20,0	13,9		Yes		
BE						8,0	20,0	15,3		Yes		
BF	Priež usalas	24,456988° E	56,715530° N	35,1	1,5	6,0	20,0	12,9		Yes		
BF						8,0	20,0	14,3		Yes		
BG	Burmeistari	24,458915° E	56,717725° N	32,5	1,5	6,0	20,0	12,8		Yes		
BG						8,0	20,0	14,1		Yes		
BH	Daijas	24,456993° E	56,717971° N	34,0	1,5	6,0	20,0	12,6		Yes		
BH						8,0	20,0	13,9		Yes		
BI	Mež a Stuberi	24,407856° E	56,696062° N	32,0	1,5	6,0	20,0	9,6		Yes		
BI						8,0	20,0	10,9		Yes		
BJ	Jaundunduri	24,403383° E	56,679811° N	35,6	1,5	6,0	20,0	9,5		Yes		
BJ						8,0	20,0	10,9		Yes		
BK	80250120069	24,407646° E	56,697080° N	31,3	1,5	6,0	20,0	9,5		Yes		
BK						8,0	20,0	10,8		Yes		
BL	Piebalgas 14	24,410784° E	56,674676° N	32,4	1,5	6,0	20,0	10,8		Yes		
BL						8,0	20,0	12,1		Yes		
BM	Piebalgas 8	24,410105° E	56,676212° N	34,1	1,5	6,0	20,0	10,7		Yes		
BM						8,0	20,0	12,0		Yes		
BN	Jaunseglini 1	24,411322° E	56,666335° N	38,2	1,5	6,0	20,0	10,7		Yes		
BN						8,0	20,0	12,0		Yes		
BO	Piebalgas 13	24,410789° E	56,675050° N	32,0	1,5	6,0	20,0	10,8		Yes		
BO						8,0	20,0	12,1		Yes		
BP	Piebalgas 11	24,410227° E	56,675033° N	32,0	1,5	6,0	20,0	10,7		Yes		
BP						8,0	20,0	12,0		Yes		
BQ	Piebalgas 10	24,410201° E	56,675472° N	32,3	1,5	6,0	20,0	10,7		Yes		
BQ						8,0	20,0	12,0		Yes		
BR	Piebalgas 9	24,410141° E	56,675858° N	33,3	1,5	6,0	20,0	10,7		Yes		
BR						8,0	20,0	12,0		Yes		
BS	Piebalgas 12	24,410759° E	56,675507° N	32,8	1,5	6,0	20,0	10,8		Yes		
BS						8,0	20,0	12,1		Yes		
BT	Jaunstrauti	24,450682° E	56,716325° N	34,2	1,5	6,0	20,0	12,3		Yes		
BT						8,0	20,0	13,6		Yes		
BU	Piebalgas 3	24,411448° E	56,674324° N	33,9	1,5	6,0	20,0	10,9		Yes		
BU						8,0	20,0	12,2		Yes		

To be continued on next page...

DECIBEL - Main Result

Calculation: Low frequency - alternative B

...continued from previous page

Noise sensitive area

No.	Name	Longitude	Latitude	Z [m]	Immission height [m]	Wind speed [m/s]	Demands		Sound level		Demands fulfilled ? Noise
							Noise [dB(A)]	From WTGs [dB(A)]	Noise		
BV	Piebalgas 1	24,412168° E	56,672647° N	37,5	1,5	6,0	20,0	11,0	Yes		
BV						8,0	20,0	12,3	Yes		
BW	Piebalgas 5	24,412286° E	56,675164° N	34,1	1,5	6,0	20,0	11,1	Yes		
BW						8,0	20,0	12,4	Yes		
BX	Piebalgas 2	24,411824° E	56,673770° N	35,4	1,5	6,0	20,0	10,9	Yes		
BX						8,0	20,0	12,3	Yes		
BY	Vigriezes 1	24,446592° E	56,641359° N	31,8	1,5	6,0	20,0	11,0	Yes		
BY						8,0	20,0	12,3	Yes		
BZ	Ievulici	24,442394° E	56,642606° N	28,3	1,5	6,0	20,0	11,3	Yes		
BZ						8,0	20,0	12,6	Yes		
CA	Zvirgzde	24,445105° E	56,643039° N	31,0	1,5	6,0	20,0	11,8	Yes		
CA						8,0	20,0	13,1	Yes		
CB	Silavas	24,443999° E	56,642773° N	30,8	1,5	6,0	20,0	11,5	Yes		
CB						8,0	20,0	12,8	Yes		
CC	Krivi	24,457322° E	56,642858° N	31,8	1,5	6,0	20,0	12,1	Yes		
CC						8,0	20,0	13,4	Yes		
CD	Šalkas	24,446094° E	56,644816° N	28,6	1,5	6,0	20,0	12,8	Yes		
CD						8,0	20,0	14,2	Yes		
CE	Dunduri	24,403018° E	56,680063° N	35,0	1,5	6,0	20,0	9,5	Yes		
CE						8,0	20,0	10,8	Yes		
CF	Rozites Nr. 16	24,446290° E	56,738504° N	29,1	1,5	6,0	20,0	9,9	Yes		
CF						8,0	20,0	11,3	Yes		
CG	Jaunzemi	24,482138° E	56,735023° N	39,6	1,5	6,0	20,0	10,7	Yes		
CG						8,0	20,0	12,1	Yes		
CH	40940020002	24,414981° E	56,677006° N	35,0	1,5	6,0	20,0	11,8	Yes		
CH						8,0	20,0	13,1	Yes		

Distances (m)

NSA	WTG																	
	1	2	3	4	5	6	7	8	9	10	11	12	13	14	15	16	17	18
A	6403	4776	3717	4591	3750	6289	5088	3097	6344	4007	1296	1820	1958	2654	5695	2639	1622	1654
B	5819	4299	3540	4041	3304	5683	4497	2720	5731	4346	1360	1610	2306	3262	5093	2187	1032	2231
C	3535	4851	6682	3848	4924	2653	3005	5306	2061	9220	6232	5764	7392	8399	2660	4846	4544	7545
D	1634	2776	5191	2823	3814	2510	2708	4598	3141	8551	6733	5949	7646	9927	2602	4819	5845	8533
E	1328	2518	4984	2500	3541	2224	2366	4328	2868	8342	6447	5665	7380	9628	2278	4523	5523	8245
F	890	1897	4439	1716	2858	1772	1596	3643	2427	7769	5720	4944	6691	8874	1642	3781	4735	7511
G	1567	2747	5175	2775	3782	2443	2647	4567	3075	8536	6698	5914	7616	9887	2535	4780	5798	8497
H	1032	1740	4278	1620	2716	1892	1597	3503	2543	7612	5594	4815	6554	8759	1716	3659	4643	7388
I	901	1816	4362	1622	2769	1762	1521	3554	2414	7688	5628	4852	6601	8780	1601	3688	4641	7418
J	1717	2264	4625	2455	3316	2631	2532	4092	3286	7985	6246	5460	7127	9459	2585	4357	5450	8046
K	2415	1550	3599	2180	2564	3269	2685	3282	3913	6943	5451	4672	6236	8689	3017	3674	4911	7236
L	1226	2226	4707	2211	3245	2139	2134	4032	2794	8062	6150	5368	7084	9332	2117	4226	5234	7948
M	2659	4759	7043	3858	5198	1798	2874	5781	1195	9979	7189	6586	8345	9735	2212	5491	5600	8713
N	1815	4293	6799	3612	5009	1418	2736	5717	1402	9987	7477	6779	8584	10330	2034	5601	6067	9152
O	2867	4876	7104	3949	5262	1981	2970	5817	1346	9983	7151	6569	8311	9629	2340	5497	5536	8639
P	2602	4989	7423	4201	5593	1955	3248	6251	1601	10509	7845	7193	8984	10534	2528	6048	6327	9444
Q	2611	4731	7028	3837	5182	1757	2853	5771	1165	9977	7197	6589	8352	9758	2184	5489	5614	8729
R	2088	4435	6861	3638	5030	1395	2685	5689	1060	9949	7305	6644	8439	10036	1965	5494	5809	8922
S	2085	4433	6859	3637	5029	1394	2685	5688	1061	9949	7306	6645	8439	10038	1964	5494	5810	8923
T	2243	4694	7177	3968	5367	1728	3054	6056	1540	10326	7748	7069	8870	10530	2335	5903	6286	9391
U	2049	4536	7080	3966	5341	1912	3169	6080	2020	10333	7930	7210	9015	10853	2509	6022	6581	9638
V	2120	4592	7092	3896	5294	1677	3002	5995	1567	10266	7725	7035	8840	10543	2291	5862	6288	9385
W	2924	5309	7736	4513	5903	2272	3555	6553	1887	10806	8118	7475	9261	10766	2836	6337	6580	9698
X	8940	6461	3909	7089	5691	9337	8029	5038	9713	1159	4158	4434	3193	4911	8750	5359	5794	4003
Y	8903	6427	3874	7049	5650	9296	7986	4992	9669	1090	4095	4376	3126	4845	8707	5308	5733	3934
Z	9118	6643	4089	7261	5862	9508	8197	5201	9878	1217	4263	4564	3268	4882	8919	5510	5912	4027
AA	8958	6482	3929	7103	5704	9350	8040	5045	9722	1118	4136	4423	3160	4852	8761	5359	5778	3955
AB	8803	6322	3771	6957	5558	9205	7899	4910	9585	1123	4074	4330	3132	4925	8619	5240	5698	3978
AC	8987	6509	3956	7135	5736	9383	8074	5082	9758	1176	4189	4471	3217	4909	8795	5400	5828	4014
AD	9066	6589	4036	7214	5815	9461	8152	5158	9835	1217	4247	4537	3264	4916	8873	5473	5891	4043
AE	8889	6413	3860	7035	5636	9282	7972	4978	9655	1082	4083	4363	3116	4842	8693	5294	5721	3927
AF	9030	6553	4000	7175	5776	9422	8113	5118	9795	1177	4204	4495	3223	4885	8834	5432	5848	4005
AG	8882	6407	3853	7026	5627	9273	7963	4969	9645	1064	4068	4350	3099	4823	8684	5283	5706	3908

To be continued on next page...

DECIBEL - Main Result

Calculation: Low frequency - alternative B

...continued from previous page

NSA	1	2	3	4	5	6	7	8	9	10	11	12	13	14	15	16	17	18
AH	8835	6357	3805	6981	5582	9229	7920	4927	9603	1065	4049	4321	3091	4846	8641	5247	5682	3916
AI	9965	7642	5223	8019	6684	10168	8845	5915	10413	1972	4205	4821	3044	3231	9553	5982	5866	3045
AJ	10015	7636	5150	8082	6717	10269	8942	5967	10548	1798	4421	4972	3260	3783	9658	6098	6110	3453
AK	9474	7159	4757	7528	6195	9675	8352	5425	9921	1586	3720	4329	2557	3008	9060	5489	5388	2638
AL	8895	6618	4283	6946	5634	9072	7752	4856	9306	1413	3088	3716	1929	2622	8457	4887	4750	2039
AM	9646	7289	4832	7708	6353	9882	8556	5595	10151	1525	4002	4567	2839	3436	9270	5705	5688	3033
AN	9716	7352	4886	7779	6421	9958	8631	5666	10230	1562	4089	4649	2928	3524	9346	5782	5777	3130
AO	9847	7555	5176	7899	6580	10026	8706	5804	10255	2020	4026	4668	2873	2931	9410	5841	5668	2787
AP	8452	6148	3789	6505	5176	8654	7330	4403	8907	1038	2741	3317	1579	2839	8040	4469	4430	1982
AQ	9521	7172	4727	7580	6230	9750	8425	5469	10015	1449	3858	4429	2695	3320	9138	5571	5543	2888
AR	9044	6735	4352	7097	5767	9244	7920	4995	9492	1299	3300	3900	2136	2878	8629	5058	4976	2318
AS	9784	7362	4836	7871	6487	10087	8762	5762	10399	1495	4403	4877	3271	4196	9482	5955	6101	3673
AT	9725	7302	4774	7813	6428	10030	8705	5704	10344	1436	4356	4826	3227	4192	9425	5900	6054	3647
AU	6442	4007	1501	4554	3157	6794	5479	2480	7157	1868	2086	2043	1786	4455	6201	2818	3460	3026
AV	6508	4136	1757	4583	3209	6796	5471	2471	7119	1804	1659	1759	1293	3976	6192	2697	3153	2535
AW	6453	4087	1726	4527	3154	6737	5412	2413	7057	1864	1604	1694	1279	3970	6132	2634	3089	2521
AX	6586	4280	2036	4644	3304	6821	5494	2535	7108	1858	1339	1599	888	3584	6210	2659	2934	2129
AY	6432	3999	1499	4541	3145	6781	5465	2465	7142	1874	2060	2019	1765	4436	6187	2799	3435	3006
AZ	5953	3488	943	4103	2705	6352	5052	2102	6747	2423	2271	2013	2240	4940	5771	2546	3400	3477
BA	6584	4247	1939	4647	3291	6841	5514	2533	7143	1791	1487	1685	1048	3735	6233	2700	3049	2290
BB	4878	2556	921	2951	1582	5171	3848	842	5514	3429	1690	1038	2347	4875	4570	1214	2211	3390
BC	5922	3446	892	4091	2699	6342	5049	2128	6749	2504	2413	2129	2392	5090	5765	2603	3502	3629
BD	5914	3448	902	4065	2668	6315	5016	2069	6712	2463	2276	2004	2264	4965	5734	2519	3386	3499
BE	7248	4926	2592	5307	3962	7483	6156	3196	7765	1273	1807	2218	873	3317	6871	3314	3484	1983
BF	6391	3999	1588	4475	3091	6698	5375	2369	7034	1903	1742	1761	1465	4154	6097	2635	3170	2706
BG	6654	4269	1853	4734	3355	6951	5627	2624	7278	1647	1796	1922	1331	3984	6348	2860	3313	2565
BH	6657	4256	1807	4744	3359	6969	5647	2640	7305	1634	1903	1998	1449	4094	6368	2903	3398	2681
BI	4432	2295	2216	3299	2567	5168	4191	2834	5755	5202	4637	3977	5056	7728	4755	3473	4830	6234
BJ	3022	1938	3570	2712	2852	3887	3290	3497	4533	6846	5633	4870	6324	8862	3639	3968	5265	7387
BK	4542	2384	2183	3387	2619	5273	4286	2857	5858	5122	4620	3972	5015	7693	4856	3501	4854	6200
BL	2293	1670	3787	2223	2702	3165	2658	3435	3814	7135	5606	4824	6406	8842	2945	3805	5021	7394
BM	2450	1635	3660	2262	2646	3312	2754	3362	3959	6999	5530	4751	6308	8768	3073	3757	4996	7313
BN	1688	2240	4609	2424	3291	2602	2498	4068	3257	7970	6221	5435	7105	9433	2552	4330	5420	8021
BO	2324	1651	3751	2221	2679	3193	2670	3408	3841	7097	5579	4797	6375	8816	2967	3784	5005	7366
BP	2346	1682	3769	2255	2709	3217	2702	3436	3866	7114	5607	4826	6400	8844	2995	3814	5037	7394
BQ	2383	1662	3728	2256	2684	3251	2720	3407	3899	7070	5577	4797	6365	8814	3023	3792	5020	7362
BR	2418	1648	3692	2259	2664	3283	2738	3384	3931	7034	5553	4773	6336	8791	3049	3774	5008	7337
BS	2364	1630	3707	2221	2653	3229	2689	3378	3876	7052	5548	4767	6339	8785	2996	3760	4987	7334
BT	6411	3971	1457	4527	3129	6769	5456	2459	7136	1907	2119	2056	1839	4510	6177	2810	3473	3079
BU	2237	1654	3802	2184	2691	3108	2607	3429	3758	7153	5600	4817	6409	8836	2890	3791	4999	7390
BV	2070	1719	3948	2162	2769	2952	2515	3521	3605	7304	5691	4906	6521	8922	2759	3855	5036	7485
BW	2275	1563	3696	2128	2596	3135	2588	3329	3781	7046	5500	4718	6304	8737	2897	3698	4915	7290
BX	2176	1666	3846	2167	2709	3050	2567	3452	3700	7199	5623	4840	6440	8857	2839	3804	5002	7415
BY	2109	4555	7035	3826	5225	1585	2911	5914	1411	10183	7609	6928	8730	10399	2193	5761	6152	9255
BZ	1907	4383	6887	3698	5095	1495	2816	5801	1447	10071	7552	6856	8661	10394	2111	5679	6133	9222
CA	1903	4356	6844	3640	5039	1411	2738	5735	1305	10006	7455	6767	8571	10274	2024	5596	6018	9114
CB	1912	4376	6871	3673	5071	1453	2778	5771	1370	10042	7504	6813	8617	10332	2068	5639	6074	9167
CC	2262	4545	6934	3713	5095	1502	2744	5733	1059	9980	7290	6645	8432	9968	2032	5509	5763	8881
CD	1737	4170	6649	3441	4840	1206	2533	5532	1113	9803	7248	6560	8364	10071	1818	5389	5813	8908
CE	3058	1958	3563	2739	2864	3923	3322	3505	4568	6834	5637	4875	6323	8865	3674	3979	5280	7388
CF	8838	6358	3807	6991	5592	9239	7932	4943	9618	1128	4094	4356	3146	4918	8653	5270	5721	3981
CG	8893	6602	4247	6945	5625	9081	7759	4849	9322	1319	3117	3730	1954	2729	8466	4895	4788	2121
CH	2343	1325	3437	1968	2345	3170	2514	3072	3805	6791	5242	4461	6041	8479	2883	3452	4685	7030